

GoToMyPC Corporate and Wake-on-LAN

Boot up computers on demand to bring down energy expenses

With GoToMyPC Corporate, your users can always access their work computers—even when they're asleep (Mac and PC) or powered off (PC only). Called Wake-on-LAN (WOL), this feature lets users send a signal to “wake up” offline computers on the corporate LAN.

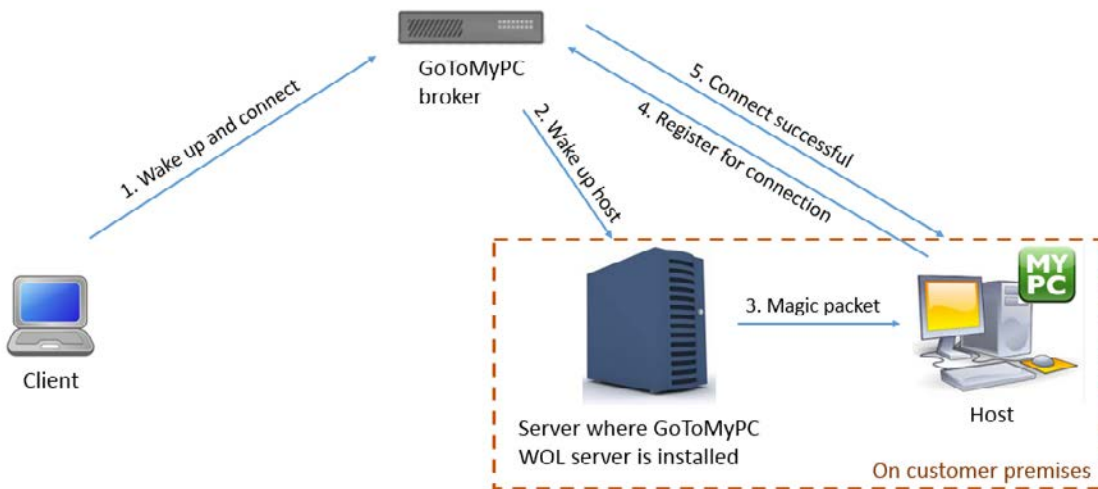
Good for business. Good for the environment.

Without WOL, employees who want the option to connect after hours through GoToMyPC remote access must leave their office computers turned on. But with hundreds of computers running in a typical corporate setting, electricity costs can quickly become a burden.

The environmental impact can also be a concern, since an employee's wish to stay productive may conflict with his or her desire to be environmentally friendly. Plenty of workers would like the chance to conserve energy by simply turning off their computers or putting them to sleep when not in use.

Key benefits

- Enable access to sleeping or powered-off computers
- Increase employee productivity and flexibility
- Save on energy expenses
- Reduce environmental footprint



Through WOL, GoToMyPC Corporate strikes a balance by allowing your users to power down their systems without sacrificing the flexibility of remote access, helping them to save both money and energy. Whether leaving for a long trip or even just for the evening, your users can rest assured knowing they still have access to their work anywhere, including from iOS and Android devices.

How it works

To enable WOL for employees, a GoToMyPC administrator installs WOL server software on a Windows PC within the corporate LAN. This computer is then left on so it can connect to the GoToMyPC broker and listen for wake-up requests sent to other network computers. On their end, users may need to configure their host computer's internal settings and network adapter for WOL if it's not already allowed by default.

Once set up, users log in to their GoToMyPC account and press the "Wake and Connect" button next to the name of the computer they wish to access from their list of computers. The GoToMyPC broker sends a notification to the WOL server, which then broadcasts a unique identifier, called a "magic packet," to wake up that particular machine. After the computer boots up, GoToMyPC automatically connects and starts a session.

Contact us

To learn more about GoToMyPC Corporate and to request a demonstration, please call us toll-free at 1 888 646 0016. Or, visit our website at www.gotomypc.com/corp.

Requirements for Wake-on-LAN

- Windows PC with GoToMyPC WOL server installed
- Host computer connected to the corporate LAN
- PC: WOL enabled in the BIOS and network adapter
- Mac: WOL enabled in the network adapter; computer in sleep mode